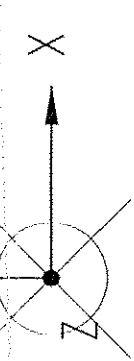
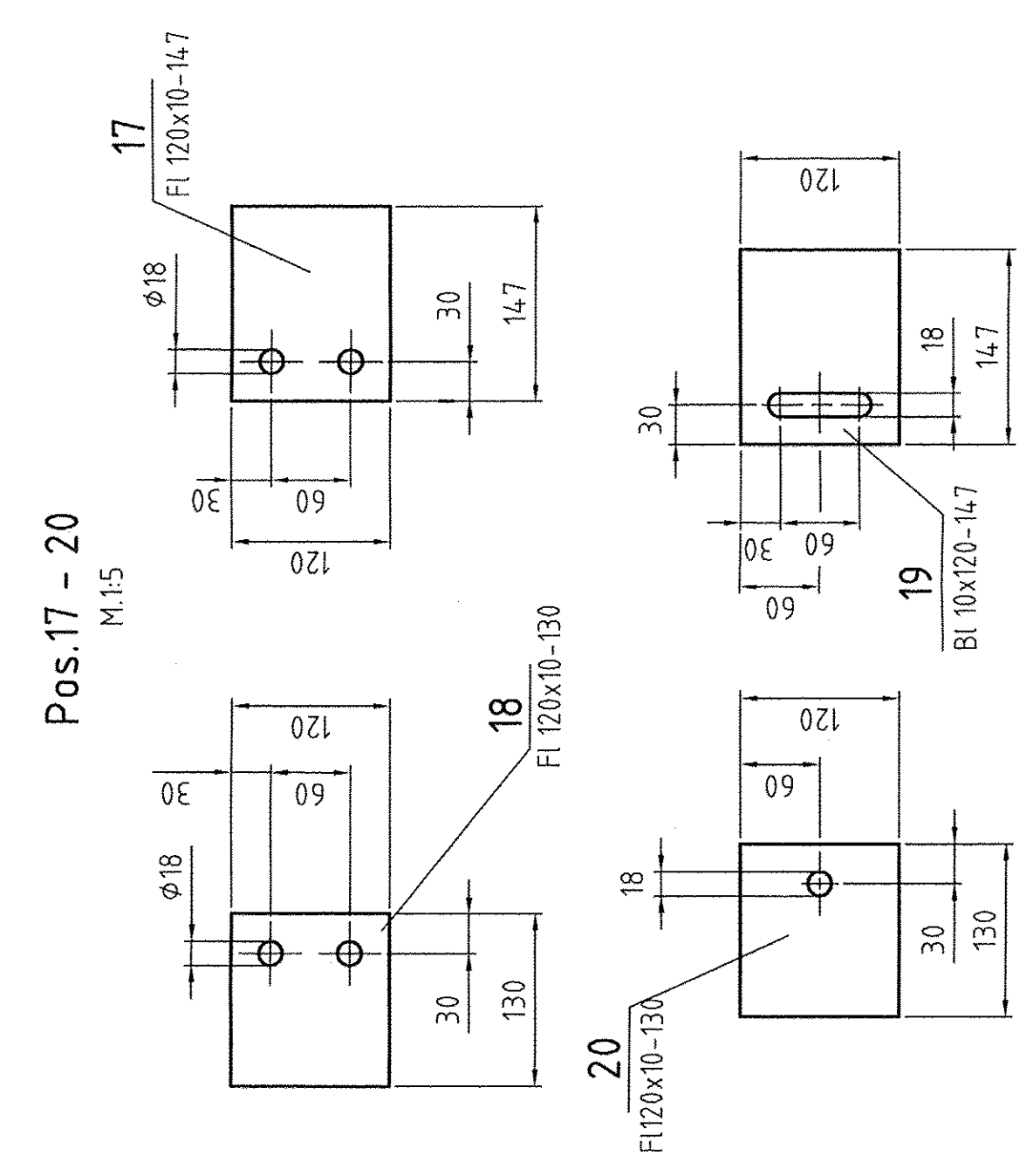
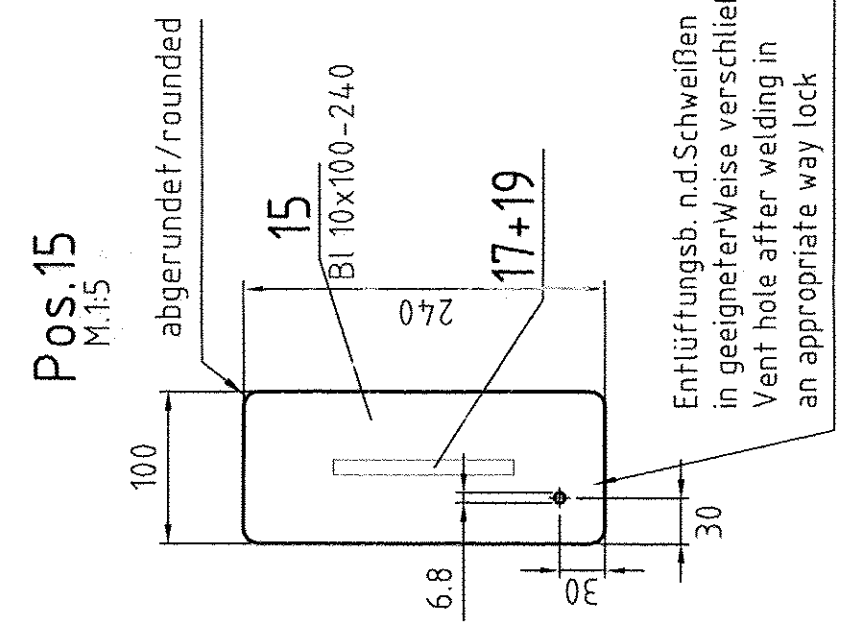
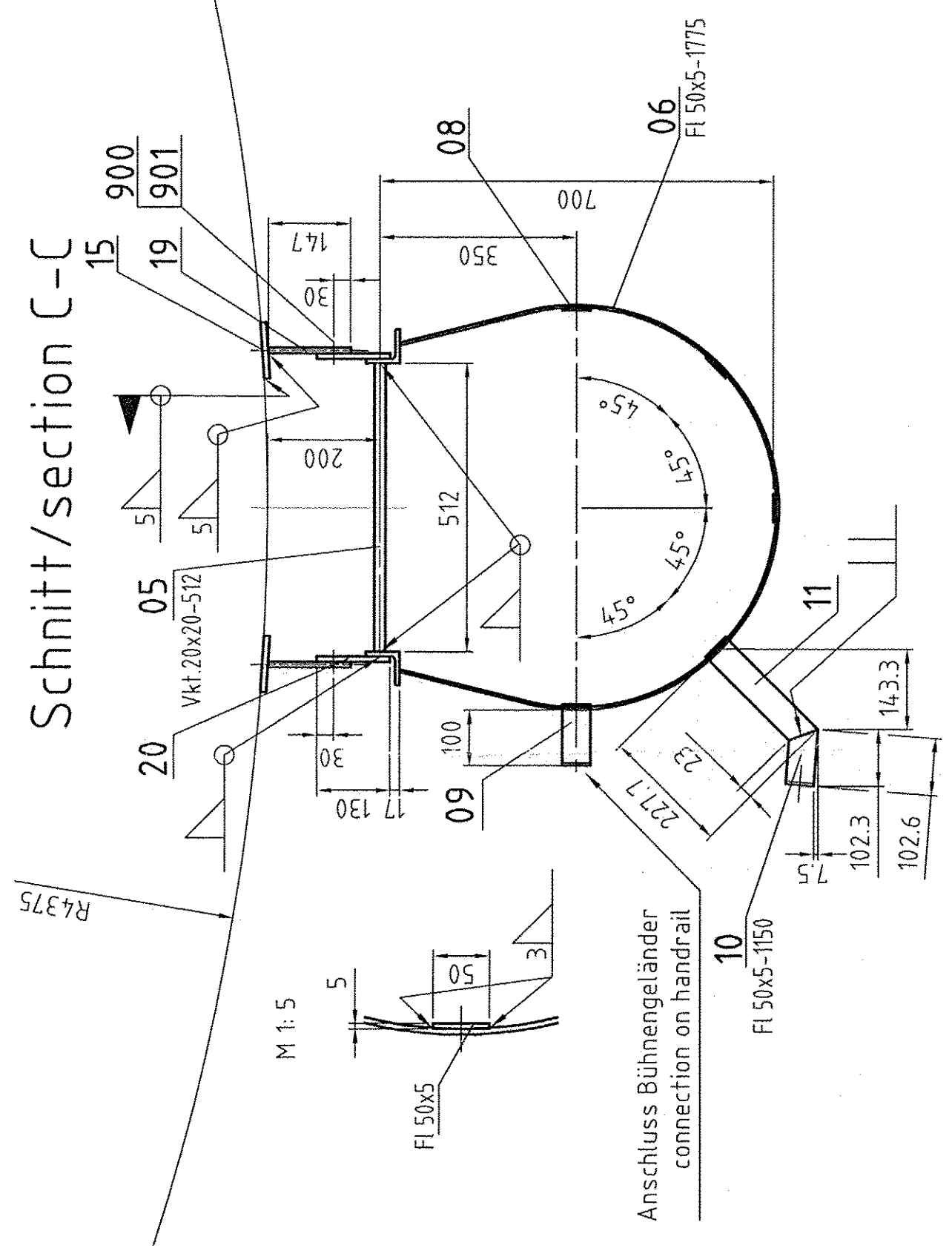
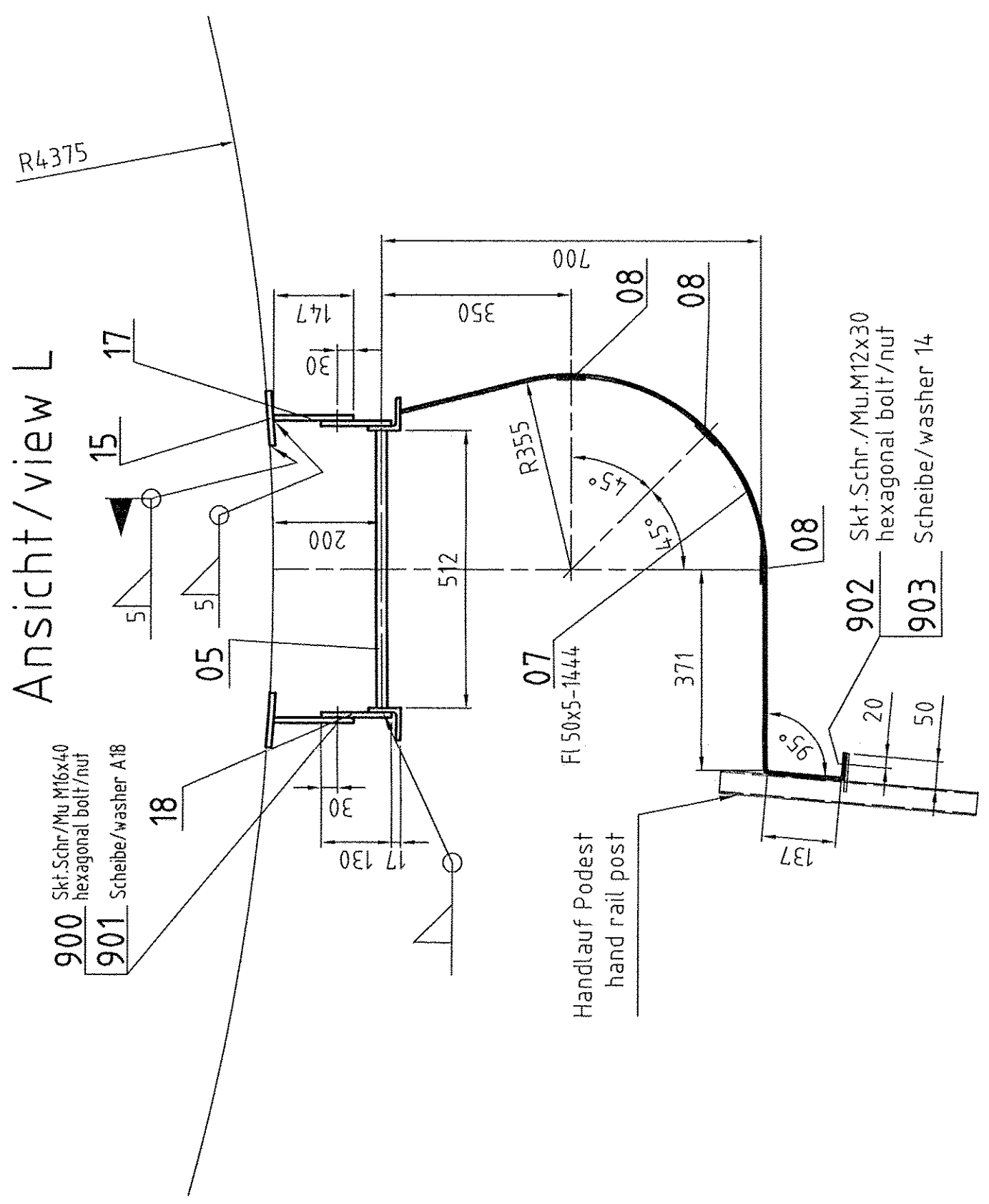
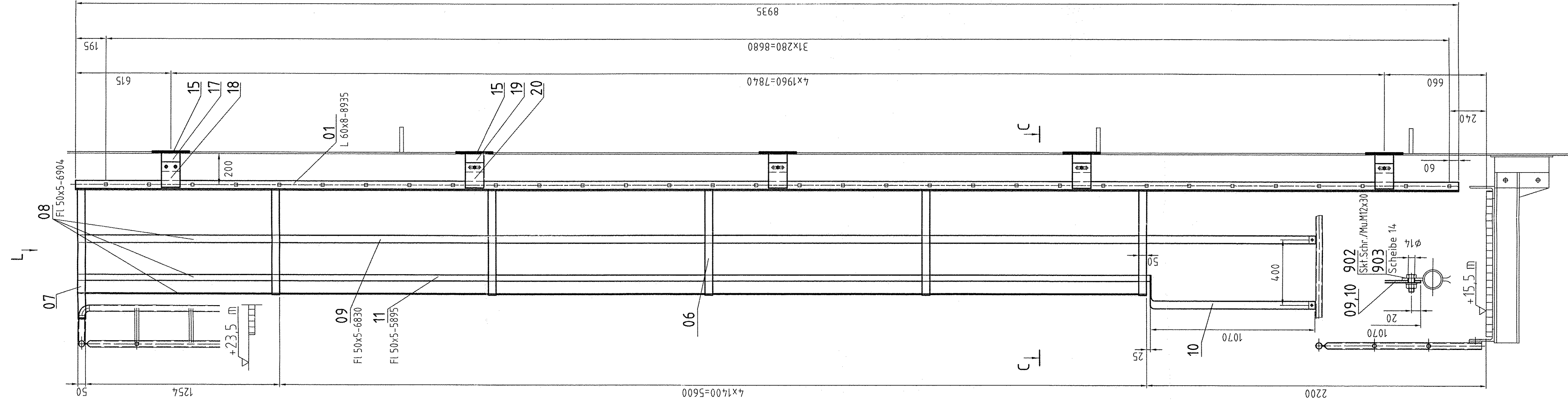


Leiter/ladder 01

+15,5 m bis 23,5 m

M 1: 15



Oberflächenbehandlung  
Surface treatment  
Bühnen, Leitern und Gitterroste:  
priming, oilers, grailings  
- hot dip galvanized

Zeichnung gehört zu:  
see also drawing:

Die folgenden technischen Anforderungen sind einzuhalten:  
The following technical requirements are to be fulfilled:

- Allgemeintoleranzen nach DIN ISO 2768 - CG
- Allgemeintoleranzen für Schweißkonstruktionen nach EN ISO 13920 - CG
- Schweißnahtvorbereitung nach DIN 8551 T1 und T4, sind 100% visuell zu prüfen.

- General tolerances in accordance with DIN ISO 2768 - C
- General tolerances for welded constructions in accordance with EN ISO 13920 - CG
- Preparation of welds in accordance with DIN 8551 part 1 and part 4, 100% visual.
- All welds without dimensions: a = 4mm

ARCHIVES REV.NO.	REV.	JOB NO.	DESCRIPTION	SIGN.	DATE

REVISIONS



Air Liquide AGS GmbH

DATE: 15.04.05	CHECKED: Speer	DESIGN: 05-01-50-449	SCALE: 1:10(1:15,1:5)	ORIGINAL FORMAT: DIN A1
JOB CODE: K70101 ASU No. 9 Kosice	REFERENCE: SHEET 2	DRAWING No: 05-101-510	REV. 0	
TITLE: Coldbox - Stages and ladders	REPLACES: SL01; SL05; SL06			